

piano

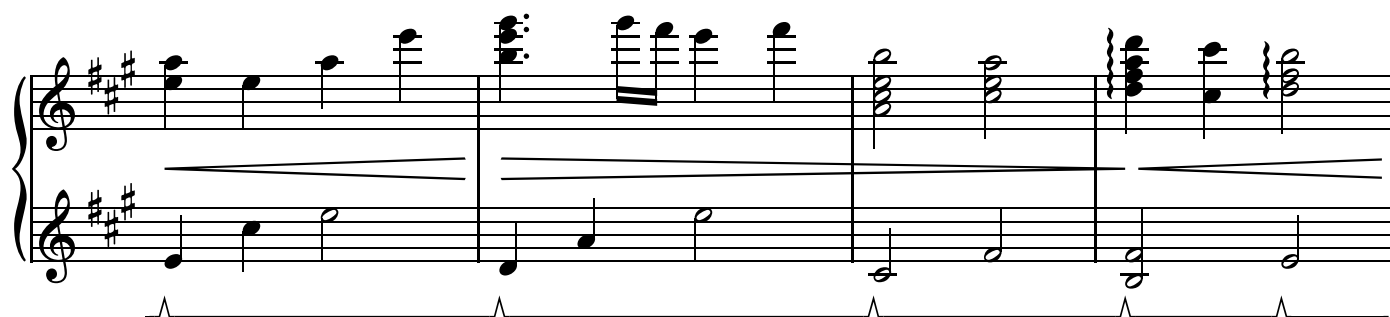
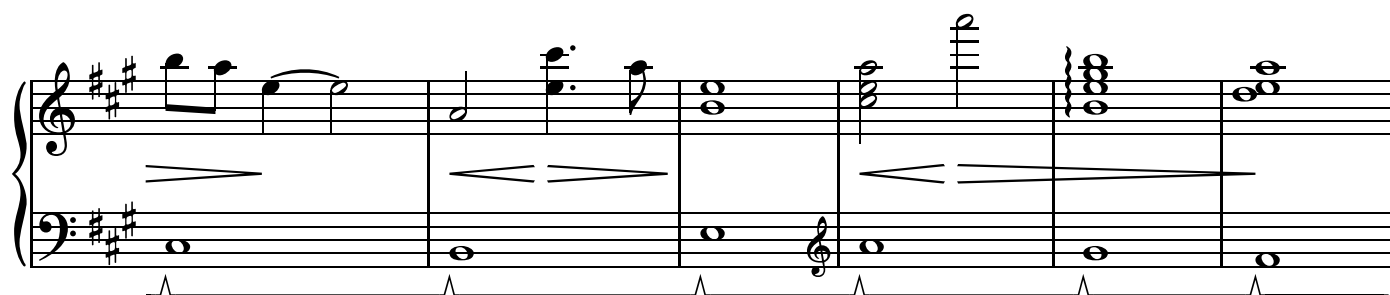
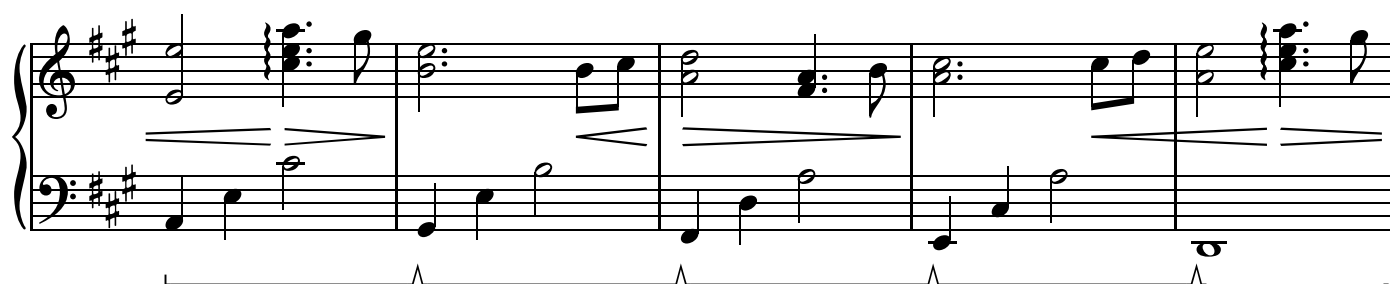
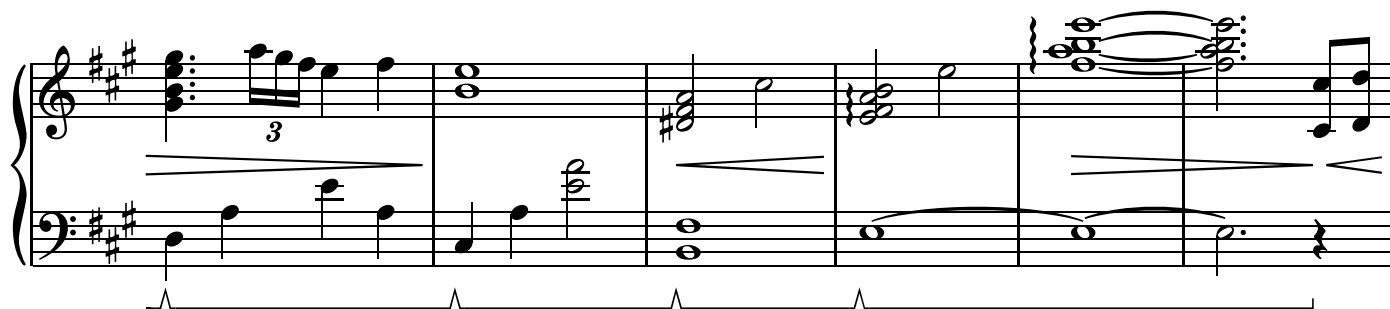
好意「koui」

Elements Garden
arranged by Ron "duVillage" van Dorp

転生したらスライムだった件「tensei shitara slime datta ken」

(♩ = 146)

The piano score is written for a four-part piano arrangement. It begins with a tempo marking of quarter note = 146. The key signature is D major (two sharps). The time signature is 4/4. The score is divided into four systems. The first system starts with a mezzo-forte (mf) dynamic. The second system features a crescendo. The third system includes a mezzo-piano (mp) dynamic. The fourth system ends with a mezzo-forte (mf) dynamic. The score includes various musical notations such as notes, rests, and dynamic markings.



A musical score for piano, page 3. The score is written for a grand piano with a treble and bass staff. The key signature is D major (two sharps). The time signature is 4/4. The piece begins with a piano (p) dynamic marking. The first two measures feature a sustained chord in the right hand and a single note in the left hand. The third measure has a whole note in the right hand and a half note in the left hand. The fourth measure contains a triplet of eighth notes in the right hand and a half note in the left hand. The fifth measure has a whole note in the right hand and a half note in the left hand. The sixth measure features a whole note in the right hand and a half note in the left hand. The seventh measure has a whole note in the right hand and a half note in the left hand. The eighth measure contains a whole note in the right hand and a half note in the left hand. The piece concludes with a double bar line.